

Who is eligible?

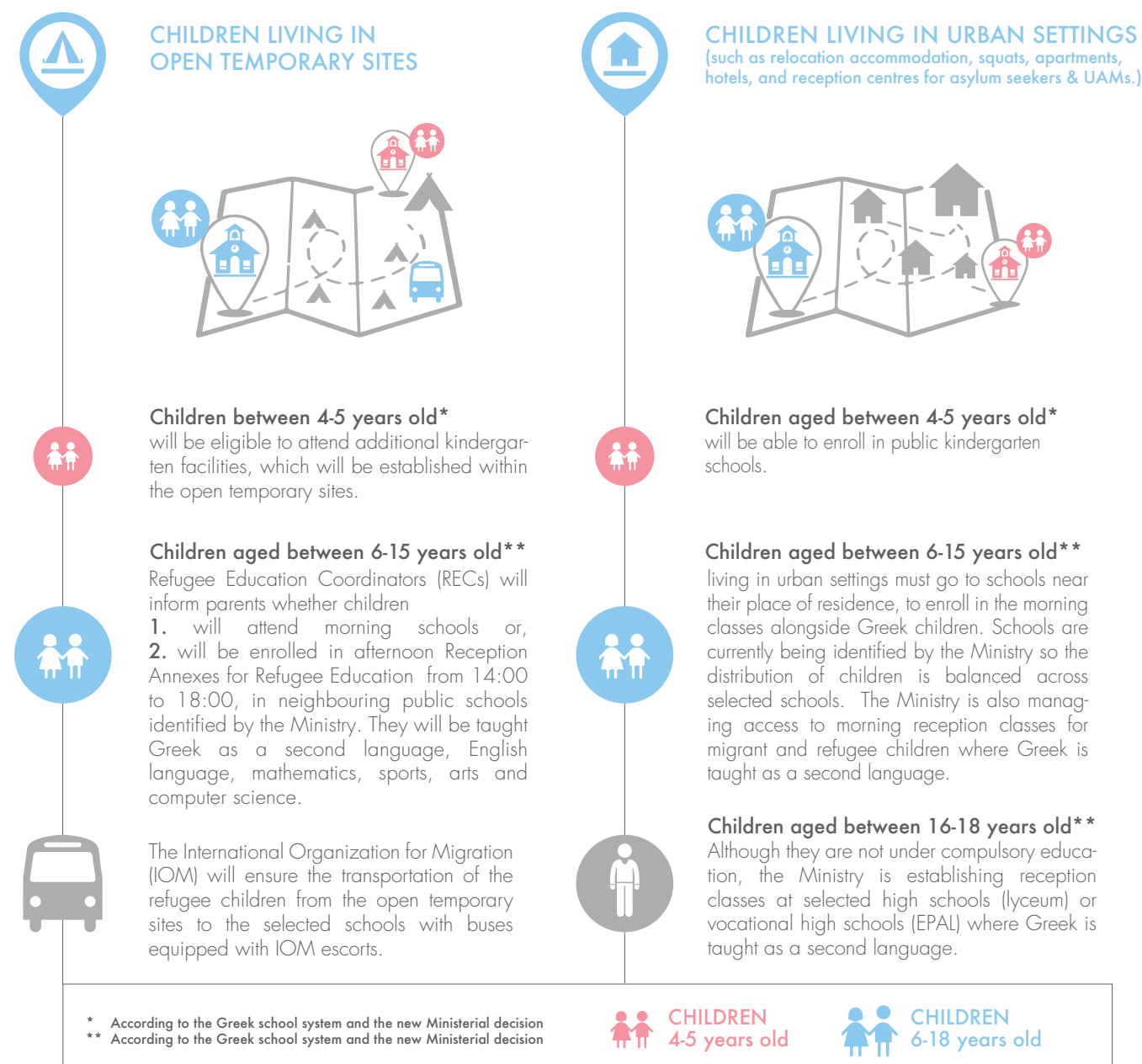
All children have the right to access school education in Greece, without distinction.



The unique condition for children to enroll at school is to be vaccinated which lies under the responsibility of the Greek Ministry of Health.

The Ministry's programme is focusing on providing access to children between 4-15 years old, who are of compulsory school age - kindergarten (nipiagogeia) to junior high school (gymnasio).

The following educational prospects are available:



Who designs the curriculum?

The Ministry of Education, Research and Religious Affairs has exclusive authority over the design and implementation of formal education programmes.



UN organizations, other International Organizations (IOs), as well as NGOs with the proper approval from the Ministry of Education will be able to run non-formal education programmes and mother tongue education lessons. For children of compulsory school age these educational programmes can only be organized during days and hours that do not conflict with formal education schedules.

What is the process for enrolment?



FOR CHILDREN LIVING IN OPEN TEMPORARY SITES



The Refugee Education Coordinators (RECs) of each accommodation site will inform the parents about the school that their children will attend, as well as provide details of the transportation to and from the site.



RECs will ask for the parents' written consent to allow their children to commute in the buses provided by the IOM, while accompanied by selected escorts.



RECs will transmit all the above documents to the person responsible for the enrollment of the children of each school.



RECs will collect all documents required for the enrolment (e.g. asylum card, medical/health record booklet, school certificates from the countries of origin, commuting consent, etc.) for all the children in the site they are responsible for.



FOR CHILDREN LIVING IN URBAN SETTINGS



Parents should enroll their children in a school in their area of residence.



Required documentation includes photocopies of the pupil's International Protection Applicant card, medical/health record booklet of vaccinations, Personal Student Health Cards (ADYM), and (if available) school certificates from their country of origin.



Proof of residence is normally needed, such as the address of stay if the person is hosted in organized accommodation or a contract/receipt for apartments rented/housing.



In the case of refugees, asylum seekers and other displaced persons, insufficient documentation will be accepted. School principals are aware of this particularity and will provide the necessary assistance and support.

Accessing public schools in Greece does not oblige refugees to stay in Greece.

Education for refugee children is available and compulsory while they stay in Greece and is beneficial to them, as it provides stability and normalcy. In addition, documentation of attendance will be provided upon departure from Greece.



Overall, the Ministry of Education facilitates the school enrolment of refugee children, even in cases of absence of the required documentation. Parents who do not have all the required documentation should still enroll their children in schools and they will be supported by the Ministry of Education in those efforts.

In order for refugee children to be placed in schools that are running reception classes in the morning, parents may refer to the school principals.

4 When will children be able to access education?

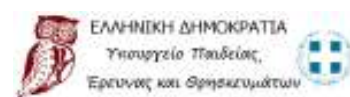
Morning regular schools has already started, while enrollment in afternoon reception classes starts in the open temporary accommodation sites.

For more information, please refer to <http://www.minedu.gov.gr/ekpaideusi/refug-educ> and contact info-refugee-education@minedu.gov.gr

Field staff are encouraged to contact the Greece Education Sector Working Group for further questions and support, eswg.greece@gmail.com.

Thank you very much for your collaboration!

DECEMBER 2017



With support from the
European Commission & UNICEF



Picture Credit: UNICEF

INFORMATION ON ACCESS TO EDUCATION FOR REFUGEE CHILDREN

INFORMATION FOR FIELD STAFF, REFUGEE PARENTS & CHILDREN

